

People-Centred Transformation

'the power of people reimaged'

“People are our greatest asset”

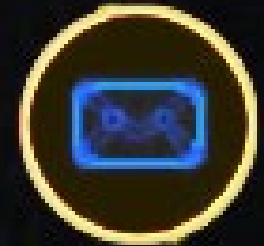
Said by many CEO's



CO-CREATION



EMPLOYEE ENGAGEMENT

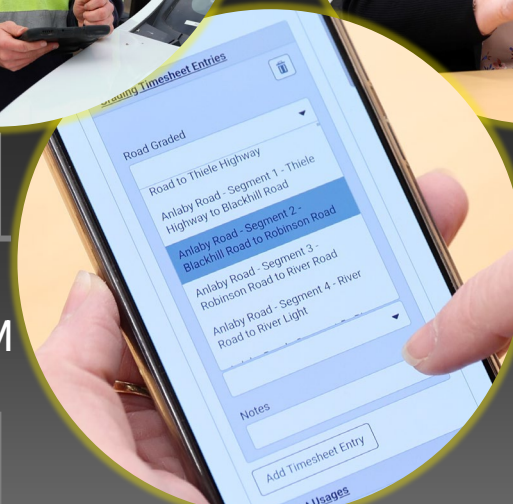
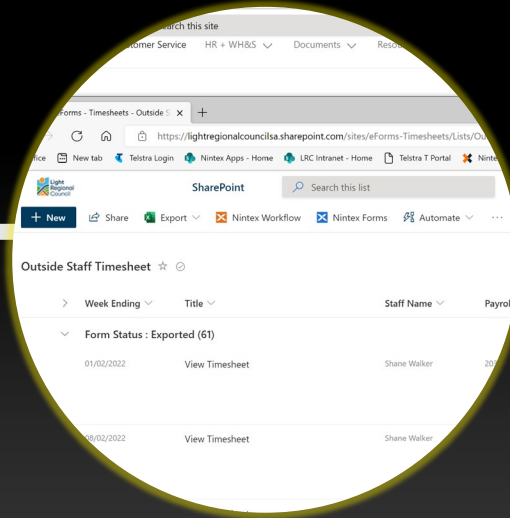


Anchoring People Over Process and Technology

ACTIVE LISTENING



Our Employee-Centred Timesheet



**CREATE TIMESHEET
USING NINTEX FORM**
Enter data, upload
attachments, save to
resume later, and send

**ACTION THROUGH
OUTLOOK**
Review the data and
information and
respond

CONNECT
Connect to API to
process the data and
store in SharePoint
Online for insight

EXPORT
Payroll data into the
cloud-based payroll
system

Mastering the Information Value Chain

IDEATION

Due
Diligence

Employee
First

Data driven

A group of approximately ten people are standing in a circle on a dark, textured surface, holding hands. They are wearing various casual clothing. Overlaid on the scene is a white geometric pattern consisting of interconnected lines forming a star-like or web-like structure. The entire scene is framed within a large, semi-transparent circle. In the center of this circle, there is a black rectangular box with the text "PEOPLE FIRST" in white. To the right of the main circle, there are two smaller, solid black circles, each containing white text: "Be aware" and "Be Brave".

PEOPLE FIRST

Be aware

Be Brave