



CRICOS PROVIDER 00123M

Nick Falkner, Director, Australian Smart Cities Consortium

# What does Smart mean for human habitation?

# SMART

Making the best use of the resources that you have, augmented with technology, to improve quality of life and make habitats thrive.









DESIRE



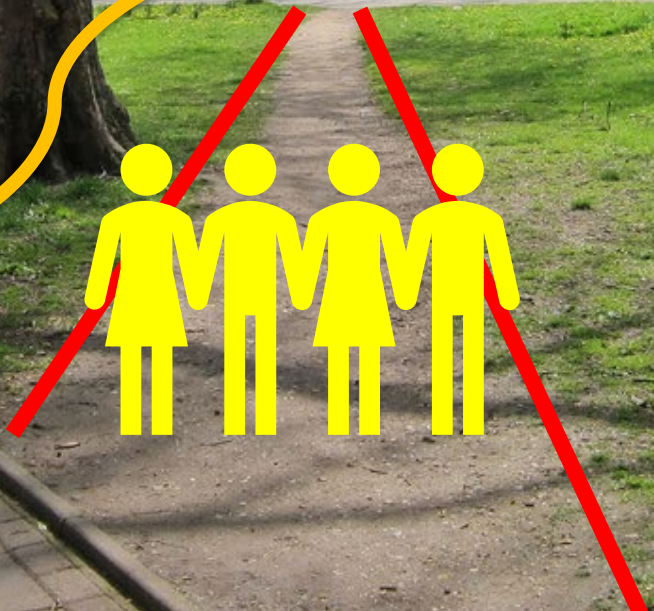
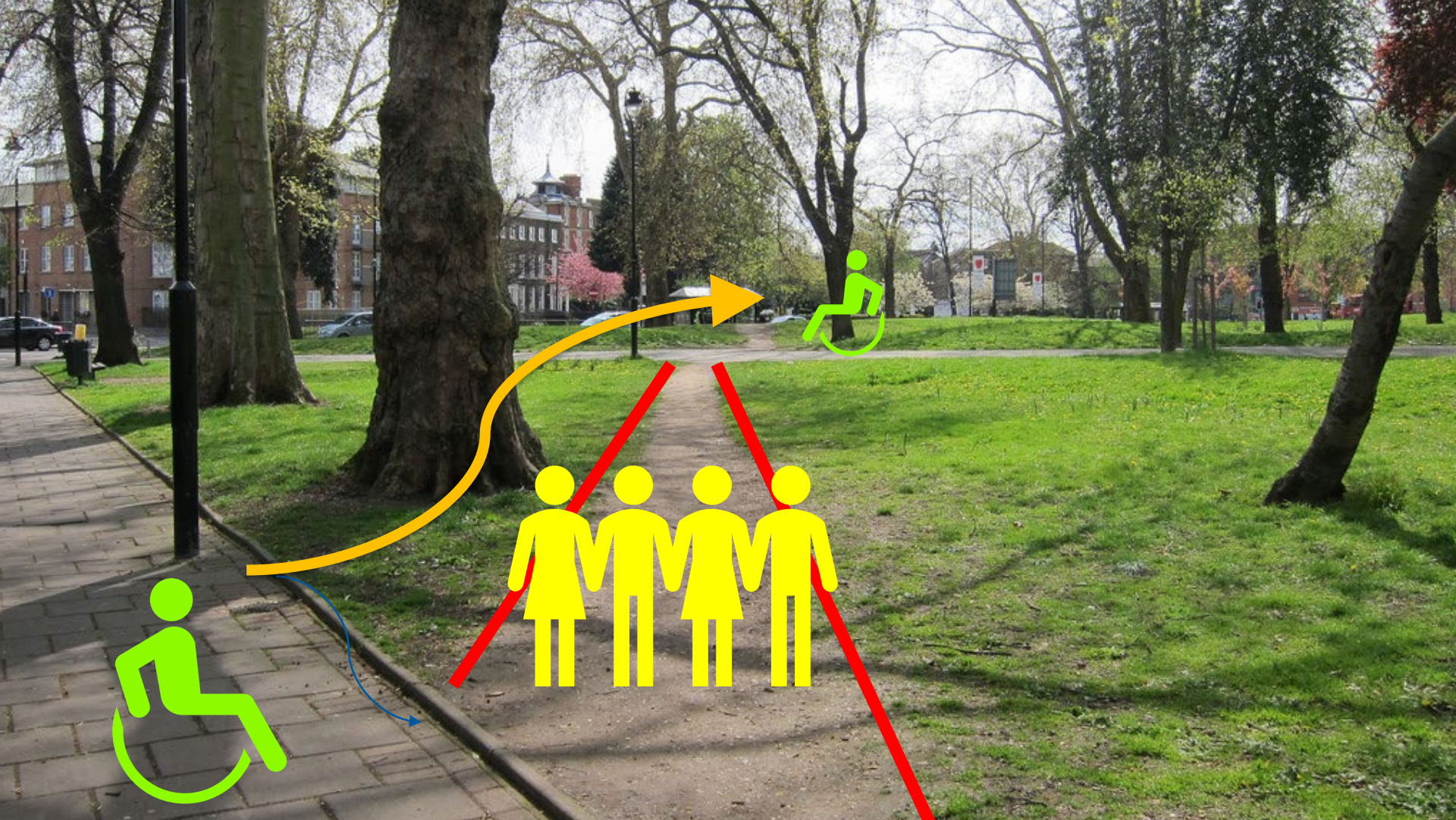


DESIRE

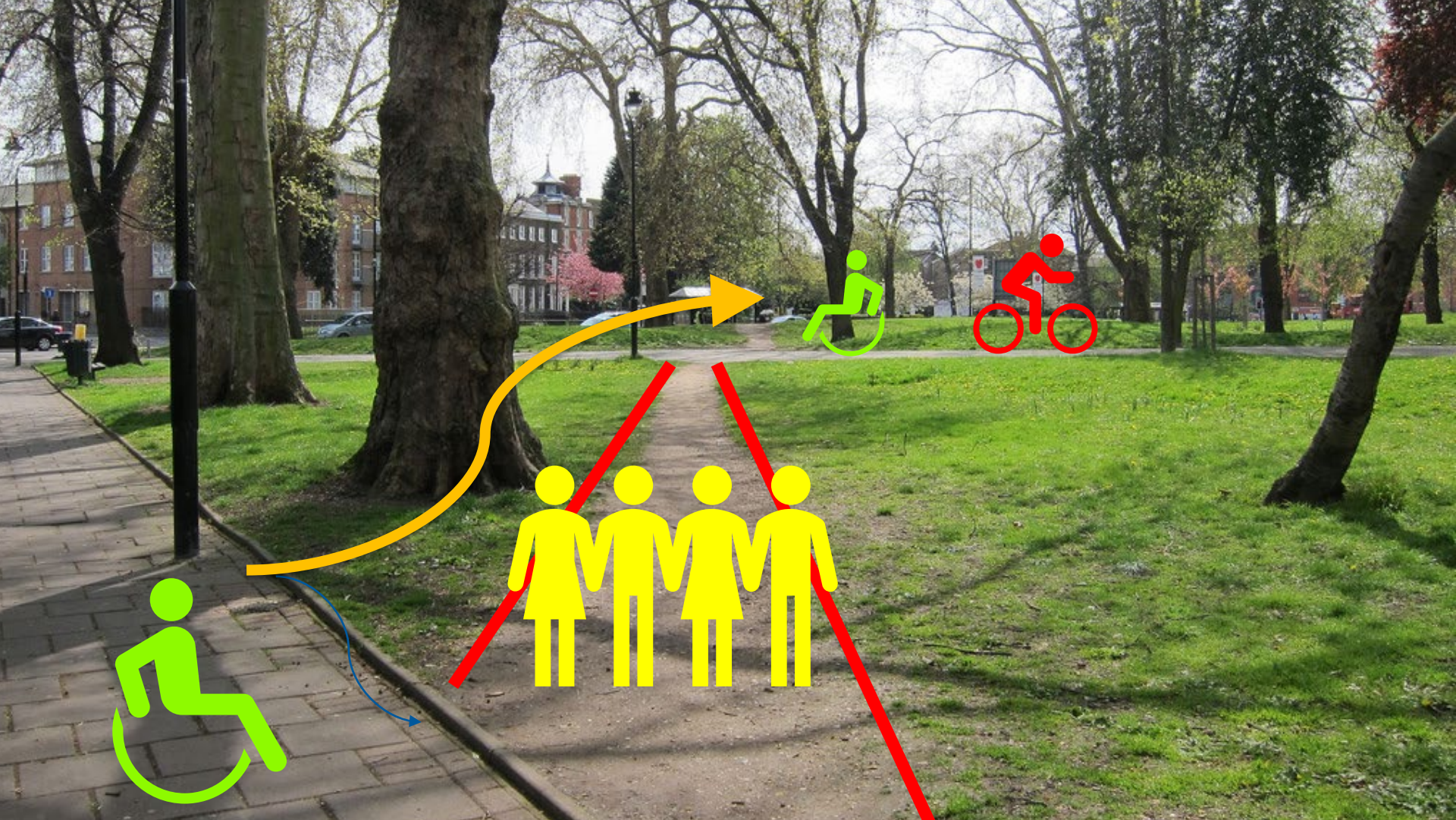




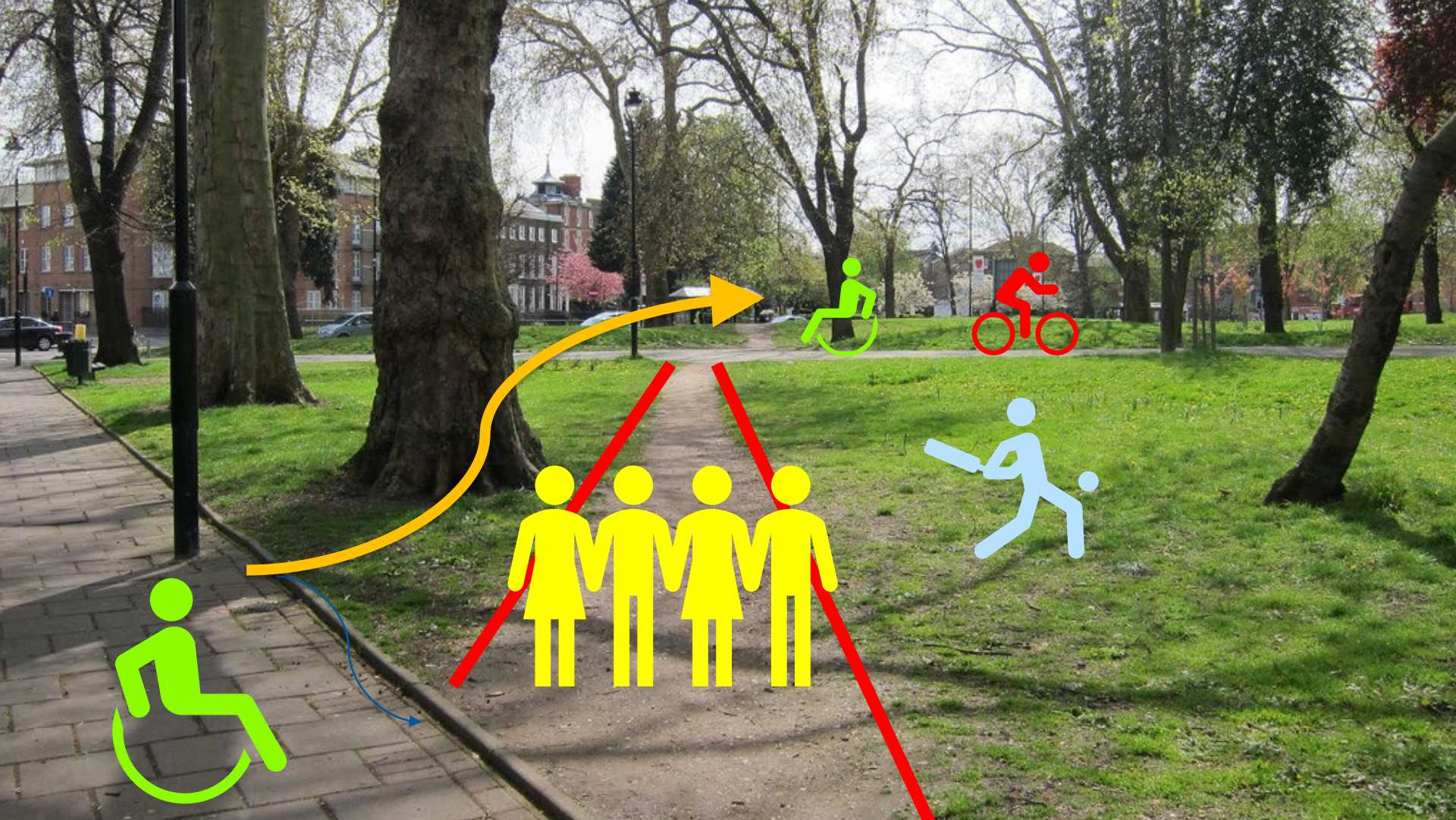




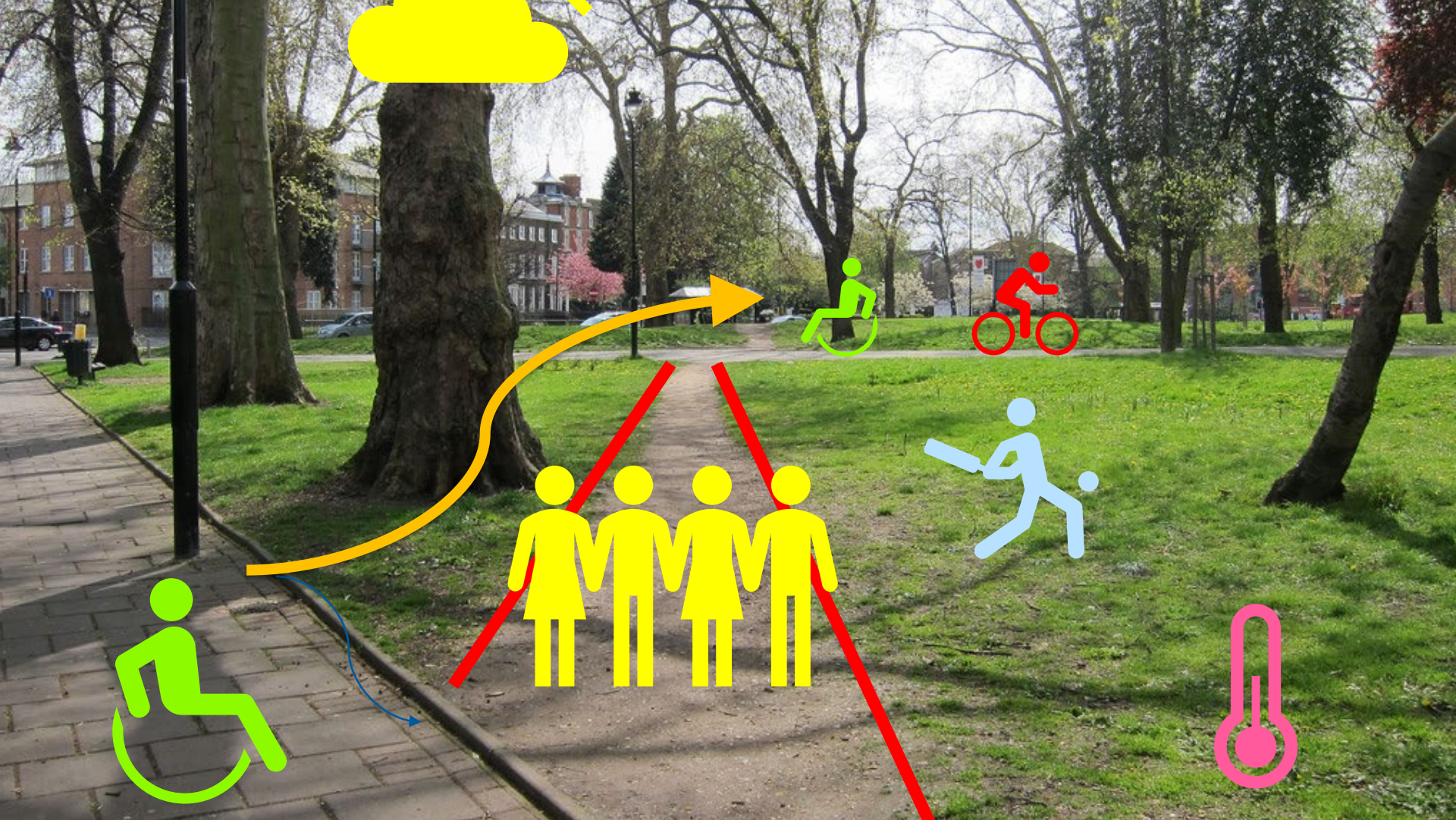














# SMART

Just knowing what's happening isn't enough. To improve the way we live requires us to use the data effectively.



MEASUREMENT

ANALYSIS

DECISIONS



# MEASUREMENT

- Surveys
- Interviews
- Observations



# MEASUREMENT

- Electronic measurement
  - Existing systems
  - Internet of Things



# SENSORS THEN

- Expensive
- Custom or application-locked
- Not truly networked



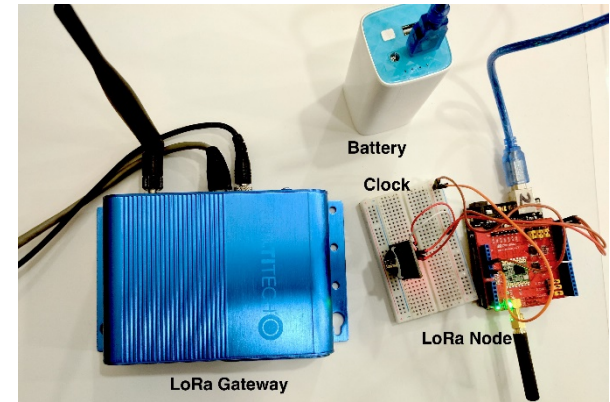
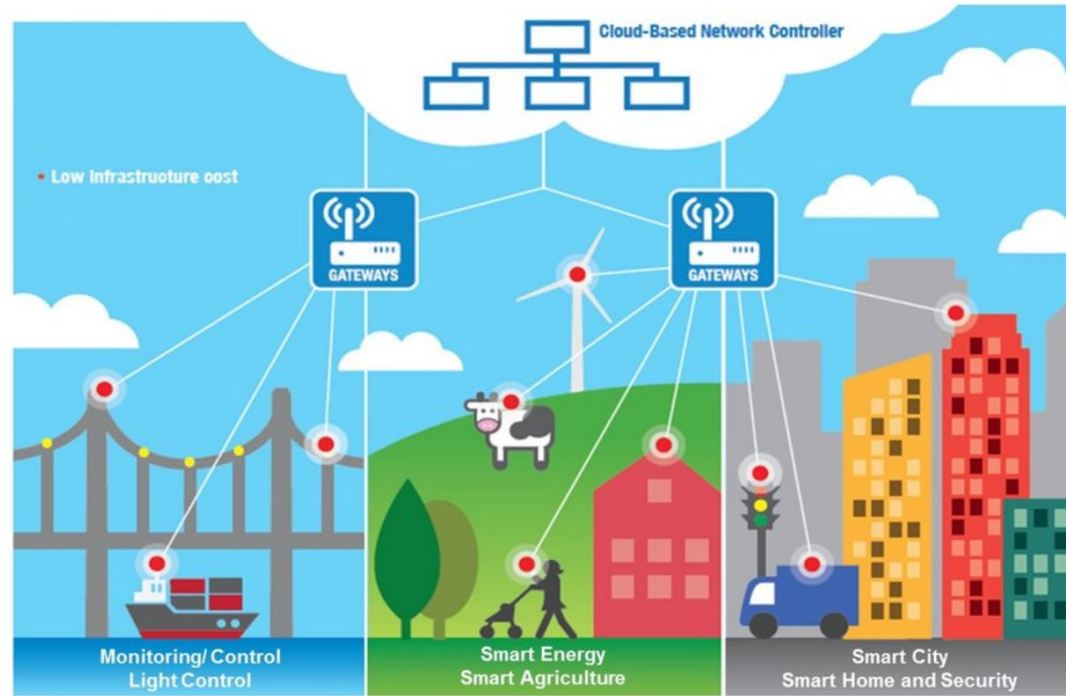
# SENSORS NOW

- Cheap
- Larger range
- Directly networked

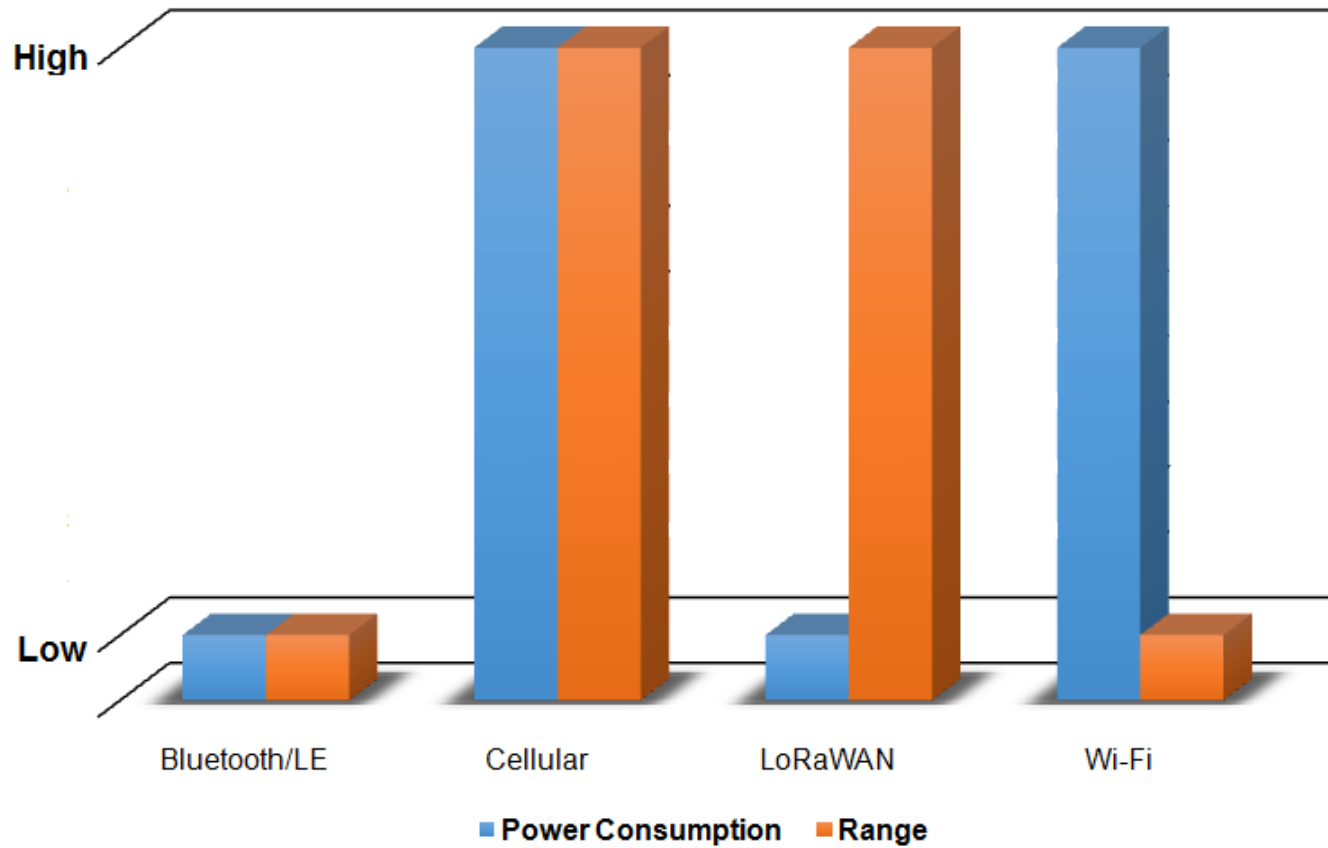


# LoRa™

## Ideal for Internet of Things











# ANALYSIS

- Data deluge
- Machine learning over huge datasets
- Find answers and questions

# DECISIONS

Good local context requires large-scale participation and everyone being able to contribute to and work with the data corpus.



# DECISIONS

Improving the way we live  
requires us to ask the right  
questions and make informed  
decisions, in the local social and  
economic context.

# The University of Adelaide's Living Lab Large scale LoRaWAN project



# Adelaide's LoRaWAN Network

- Things Network
- University of Adelaide
- Council consortium

# Adelaide's LoRaWAN Network

- Connectivity across the greater metropolitan area
- Regional coverage in a number of areas



# Adelaide's LoRaWAN Network

- Data concentration
- Privacy and ethical data considerations
- Link to analysis partners

# Adelaide's LoRaWAN Network

- Low cost of participation
- Active partnerships
- Research and development
- Innovation/transformation



THE UNIVERSITY  
*of* ADELAIDE